

The Residences at
Central Park

THE SKY COLLECTION
FLOORS 9-28

WINNER – Project of the Year
Ontario Home Builders' Association – People's Choice

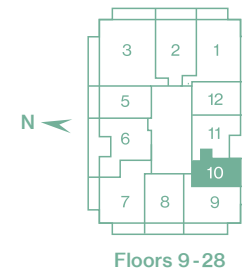
Where the urban and natural worlds connect



The Spruce | 1 Bedroom



The Residences at
Central Park

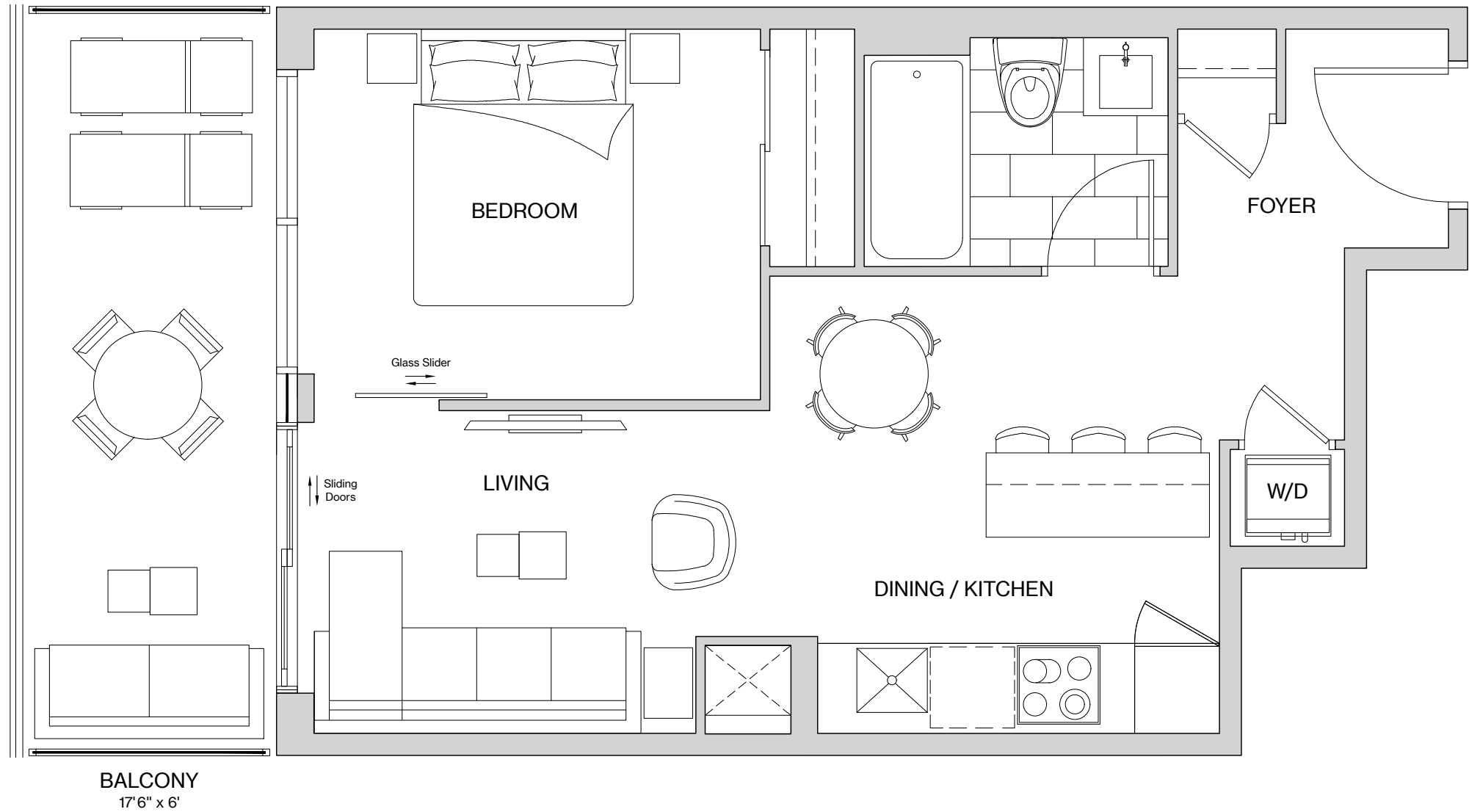


Spruce 1 Bedroom

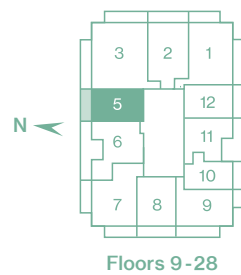
	sq ft
Interior Area	425
Balcony Area	90
TOTAL AREA	515

Sizes and specifications are subject to change without notice. E.&O.E. Actual usable space may vary from any stated floor area. All dimensions are subject to normal construction variances. Footages are estimated and may vary from that stated. Furniture not included. Measurements set forth on any floor plan are generally taken at the greatest points, without regard for any cutouts. Floor measurements were calculated on the middle floor of typical floor plates. Location of vertical mullions on balconies varies and is not necessarily as shown.

The Cypress | 1 Bedroom



The Residences at
Central Park



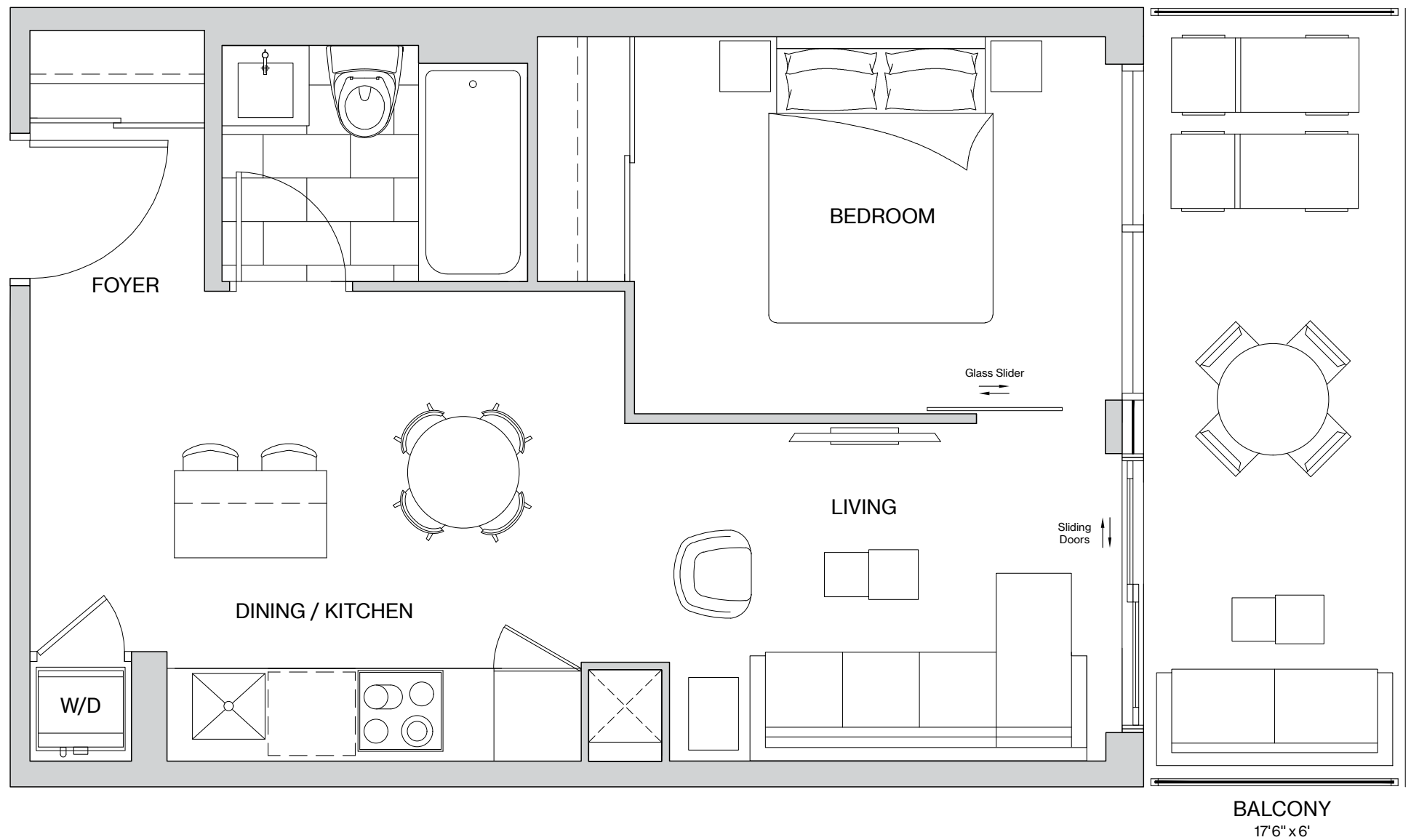
Cypress

1 Bedroom

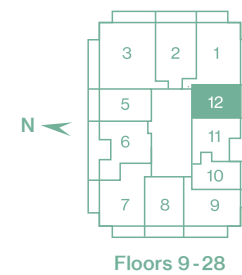
	sq ft
Interior Area	456
Balcony Area	105
TOTAL AREA	561

Sizes and specifications are subject to change without notice. E.&O.E. Actual usable space may vary from any stated floor area. All dimensions are subject to normal construction variances. Footages are estimated and may vary from that stated. Furniture not included. Measurements set forth on any floor plan are generally taken at the greatest points, without regard for any cutouts. Floor measurements were calculated on the middle floor of typical floor plates. Location of vertical mullions on balconies varies and is not necessarily as shown.

The Cedar | 1 Bedroom



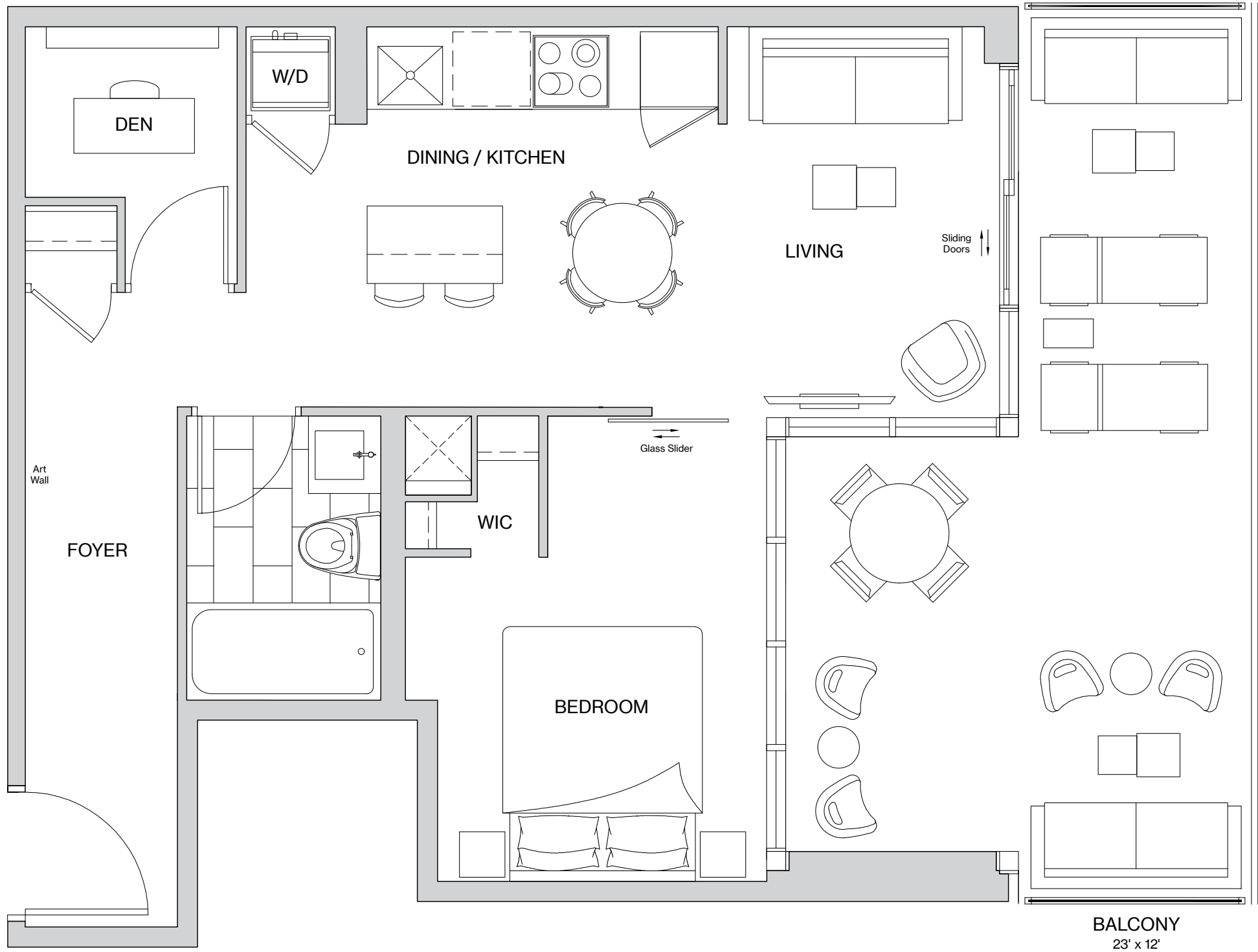
The Residences at
Central Park



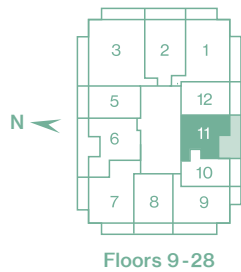
Cedar	
1 Bedroom	
	sq ft
Interior Area	466
Balcony Area	105
TOTAL AREA	571

Sizes and specifications are subject to change without notice. E.&O.E. Actual usable space may vary from any stated floor area. All dimensions are subject to normal construction variances. Footages are estimated and may vary from that stated. Furniture not included. Measurements set forth on any floor plan are generally taken at the greatest points, without regard for any cutouts. Floor measurements were calculated on the middle floor of typical floor plates. Location of vertical mullions on balconies varies and is not necessarily as shown.

The Linden | 1 Bedroom + Den



The Residences at
Central Park



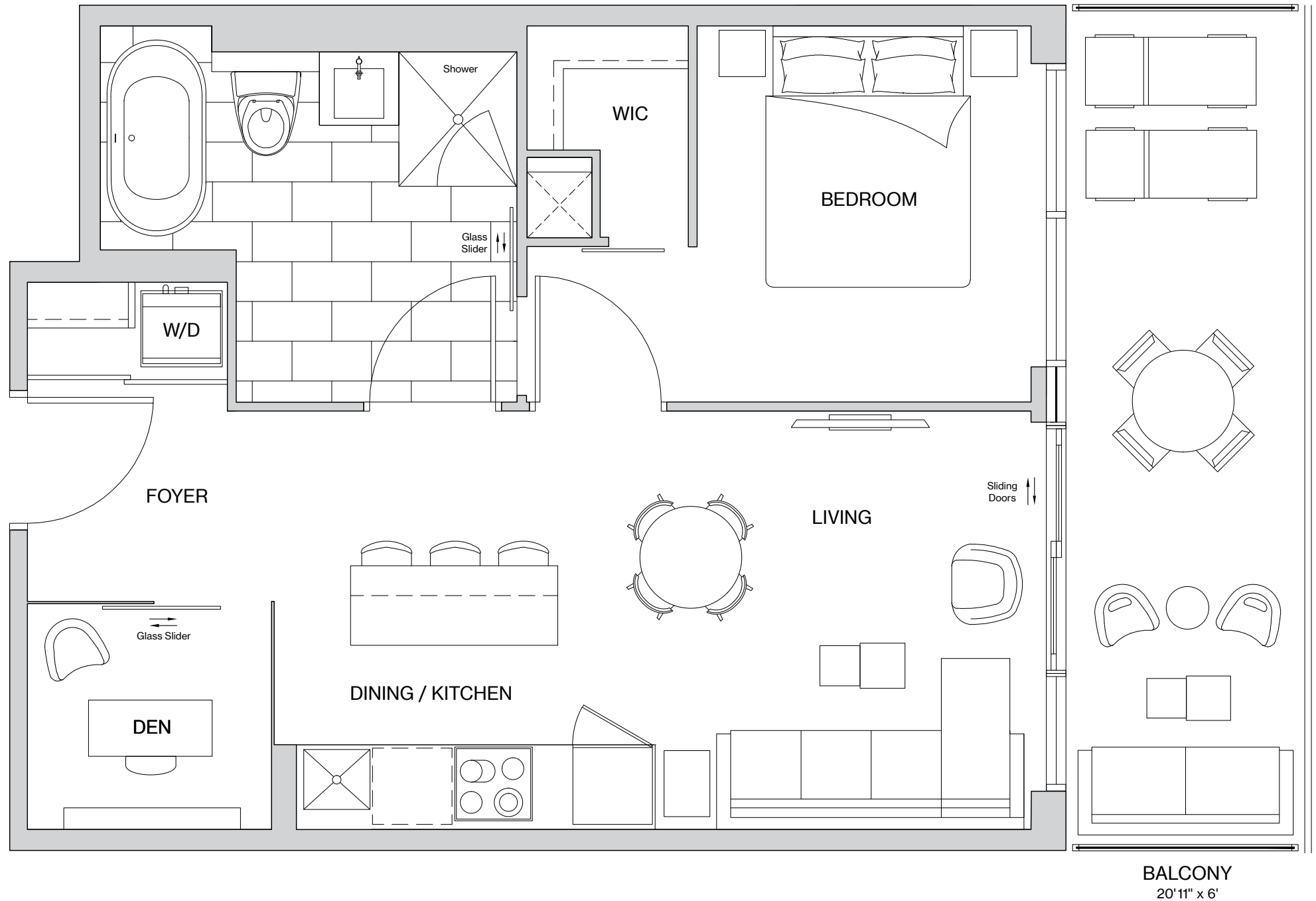
Linden

1 Bedroom + Den

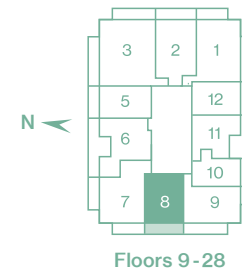
	sq ft
Interior Area	515
Balcony Area	203
TOTAL AREA	718

Sizes and specifications are subject to change without notice. E.&O.E. Actual usable space may vary from any stated floor area. All dimensions are subject to normal construction variances. Footages are estimated and may vary from that stated. Furniture not included. Measurements set forth on any floor plan are generally taken at the greatest points, without regard for any cutouts. Floor measurements were calculated on the middle floor of typical floor plates. Location of vertical mullions on balconies varies and is not necessarily as shown.

The Juniper | 1 Bedroom + Den



The Residences at
Central Park



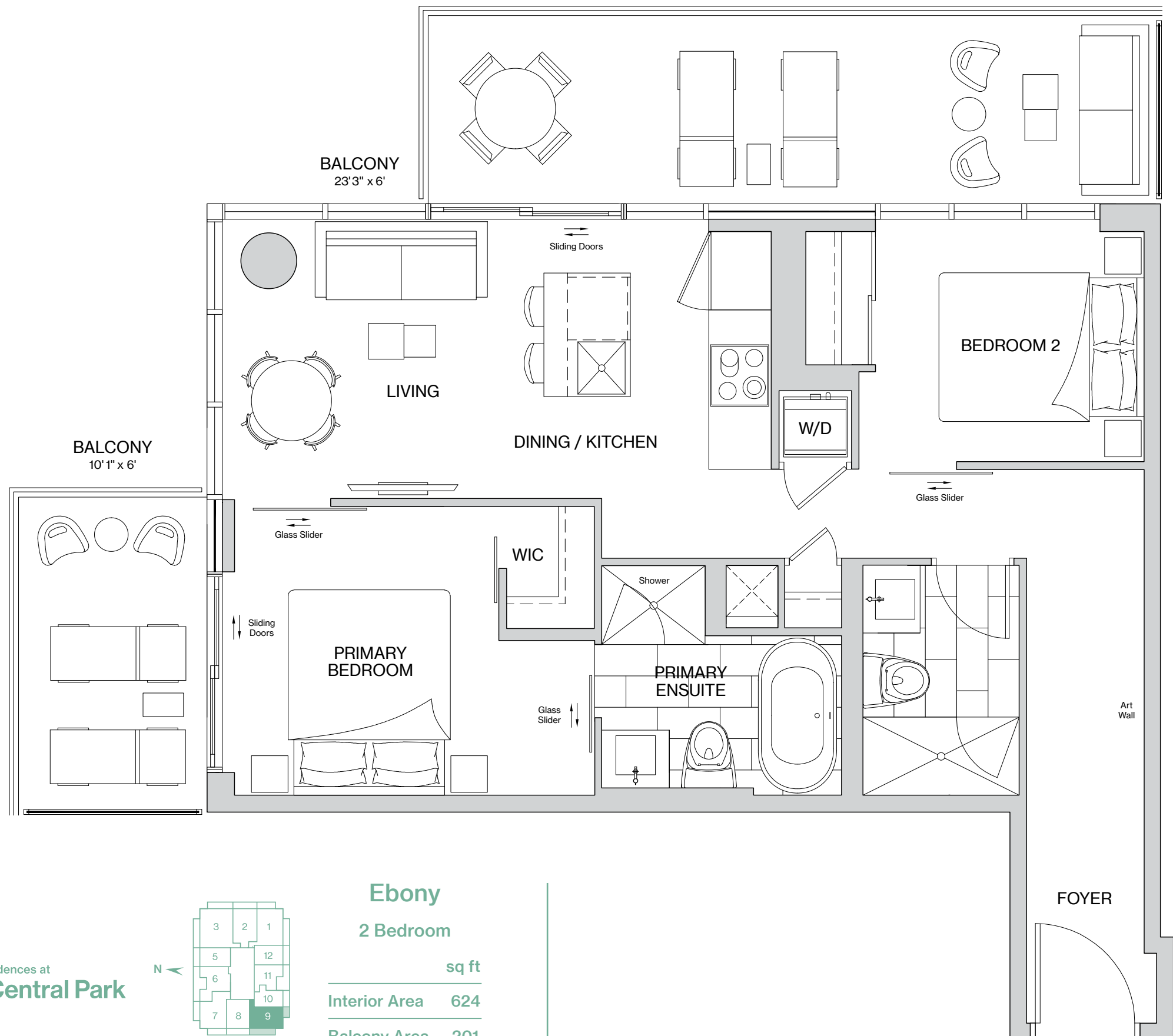
Juniper

1 Bedroom + Den

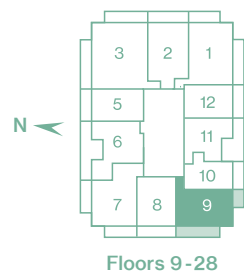
	sq ft
Interior Area	548
Balcony Area	127
TOTAL AREA	675

Sizes and specifications are subject to change without notice. E.&O.E. Actual usable space may vary from any stated floor area. All dimensions are subject to normal construction variances. Footages are estimated and may vary from that stated. Furniture not included. Measurements set forth on any floor plan are generally taken at the greatest points, without regard for any cutouts. Floor measurements were calculated on the middle floor of typical floor plates. Location of vertical mullions on balconies varies and is not necessarily as shown.

The Ebony | 2 Bedroom



The Residences at
Central Park



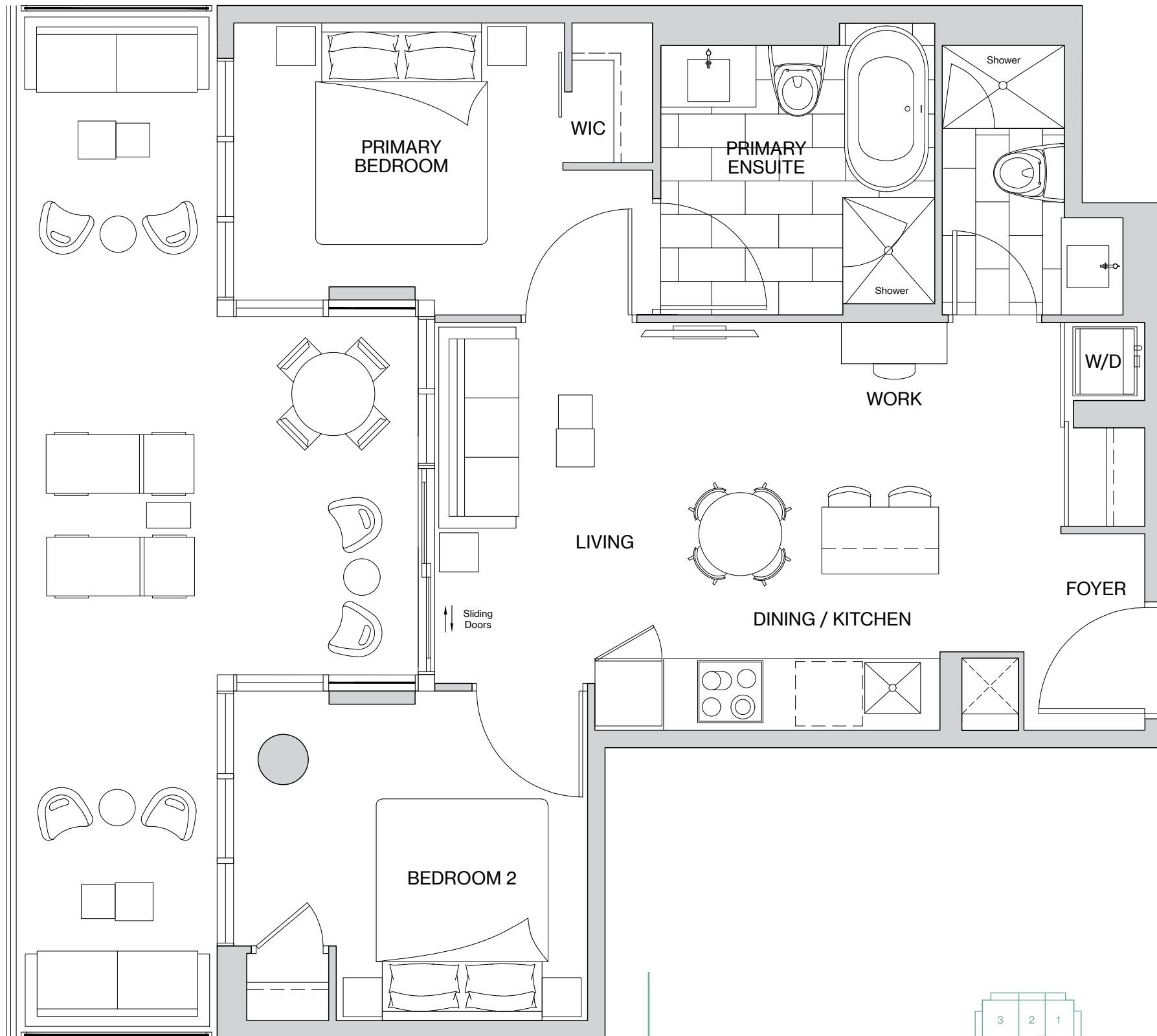
Ebony

2 Bedroom

	sq ft
Interior Area	624
Balcony Area	201
TOTAL AREA	825

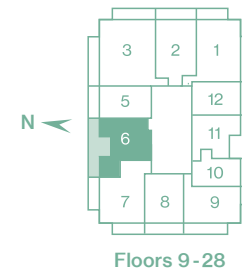
Sizes and specifications are subject to change without notice. E.&O.E. Actual usable space may vary from any stated floor area. All dimensions are subject to normal construction variances. Footages are estimated and may vary from that stated. Furniture not included. Measurements set forth on any floor plan are generally taken at the greatest points, without regard for any cutouts. Floor measurements were calculated on the middle floor of typical floor plates. Location of vertical mullions on balconies varies and is not necessarily as shown.

The Alder | 2 Bedroom



BALCONY
30'10" x 12'

The Residences at
Central Park



Floors 9-28

Alder	
2 Bedroom	
	sq ft
Interior Area	651
Balcony Area	251
TOTAL AREA	902

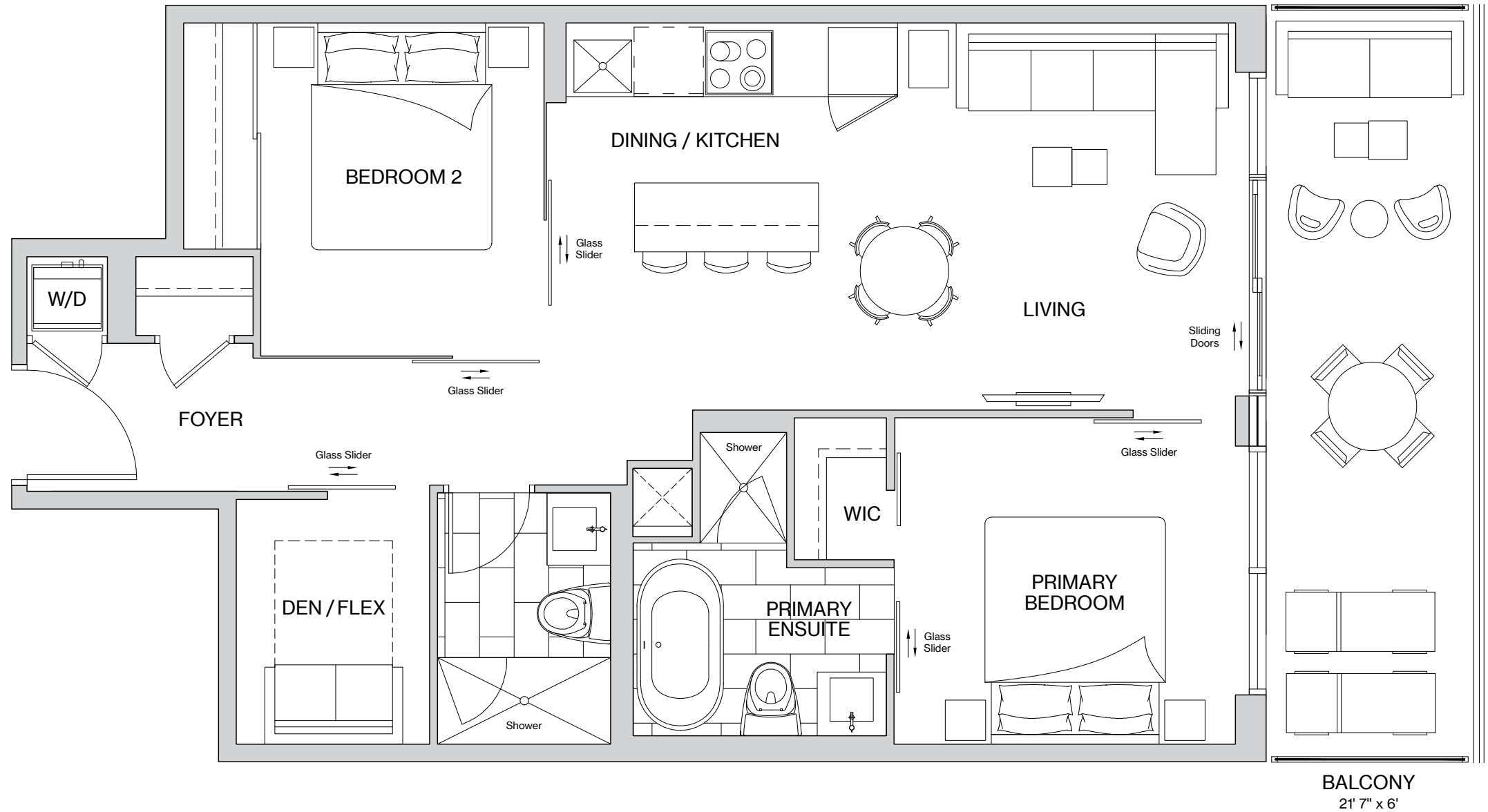
Sizes and specifications are subject to change without notice. E.&O.E. Actual usable space may vary from any stated floor area. All dimensions are subject to normal construction variances. Footages are estimated and may vary from that stated. Furniture not included. Measurements set forth on any floor plan are generally taken at the greatest points, without regard for any cutouts. Floor measurements were calculated on the middle floor of typical floor plates. Location of vertical mullions on balconies varies and is not necessarily as shown.



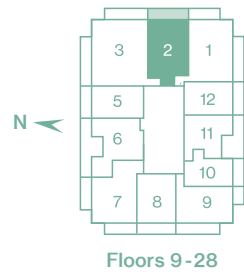


Where the urban and natural worlds connect

The Redwood | 2 Bedroom + Den



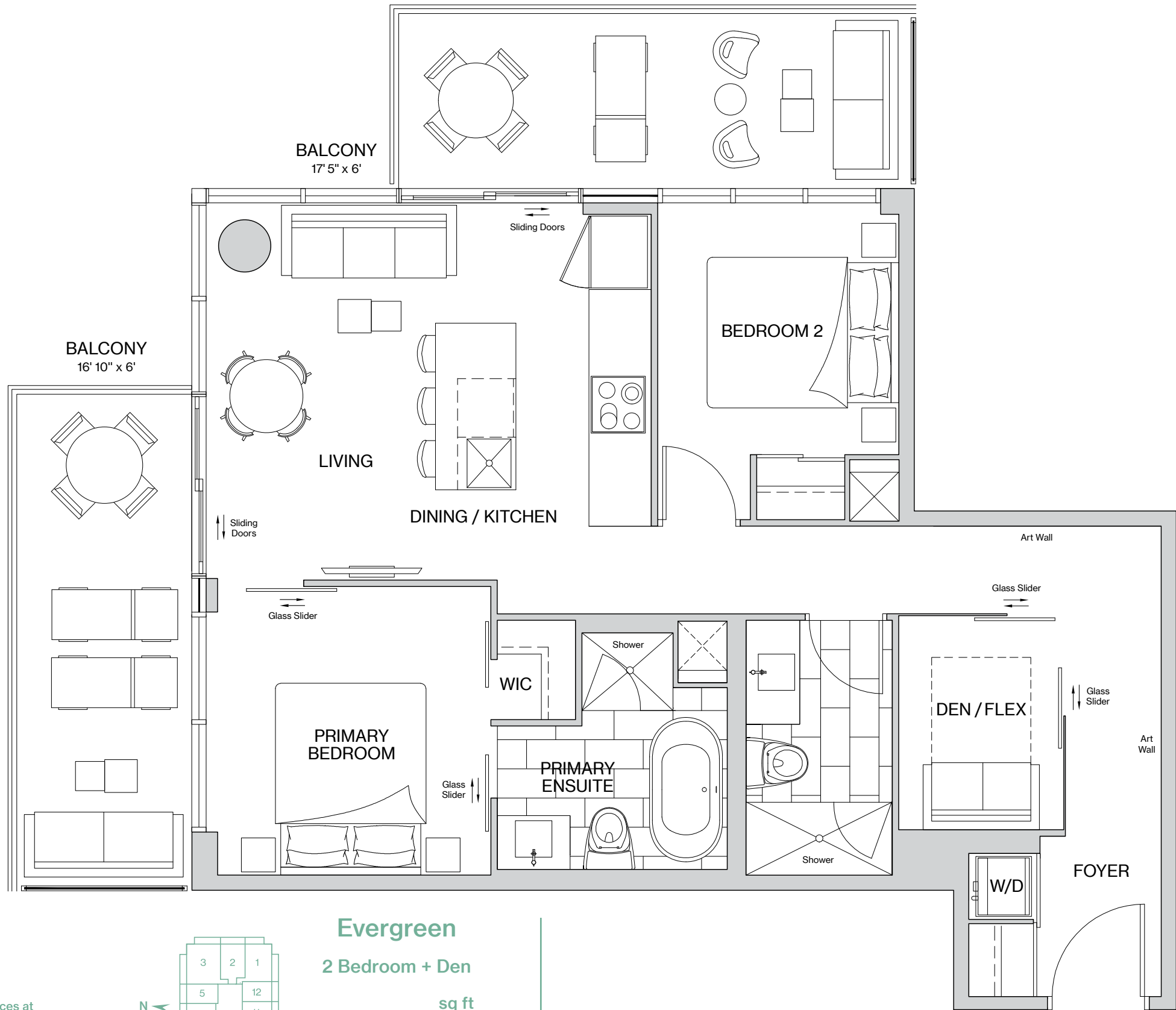
The Residences at
Central Park



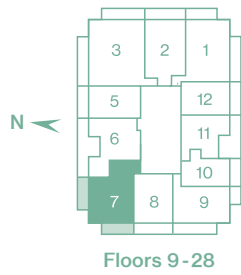
Redwood	
2 Bedroom + Den	
	sq ft
Interior Area	710
Balcony Area	130
TOTAL AREA	840

Sizes and specifications are subject to change without notice. E.&O.E. Actual usable space may vary from any stated floor area. All dimensions are subject to normal construction variances. Footages are estimated and may vary from that stated. Furniture not included. Measurements set forth on any floor plan are generally taken at the greatest points, without regard for any cutouts. Floor measurements were calculated on the middle floor of typical floor plates. Location of vertical mullions on balconies varies and is not necessarily as shown.

The Evergreen | 2 Bedroom + Den



The Residences at
Central Park



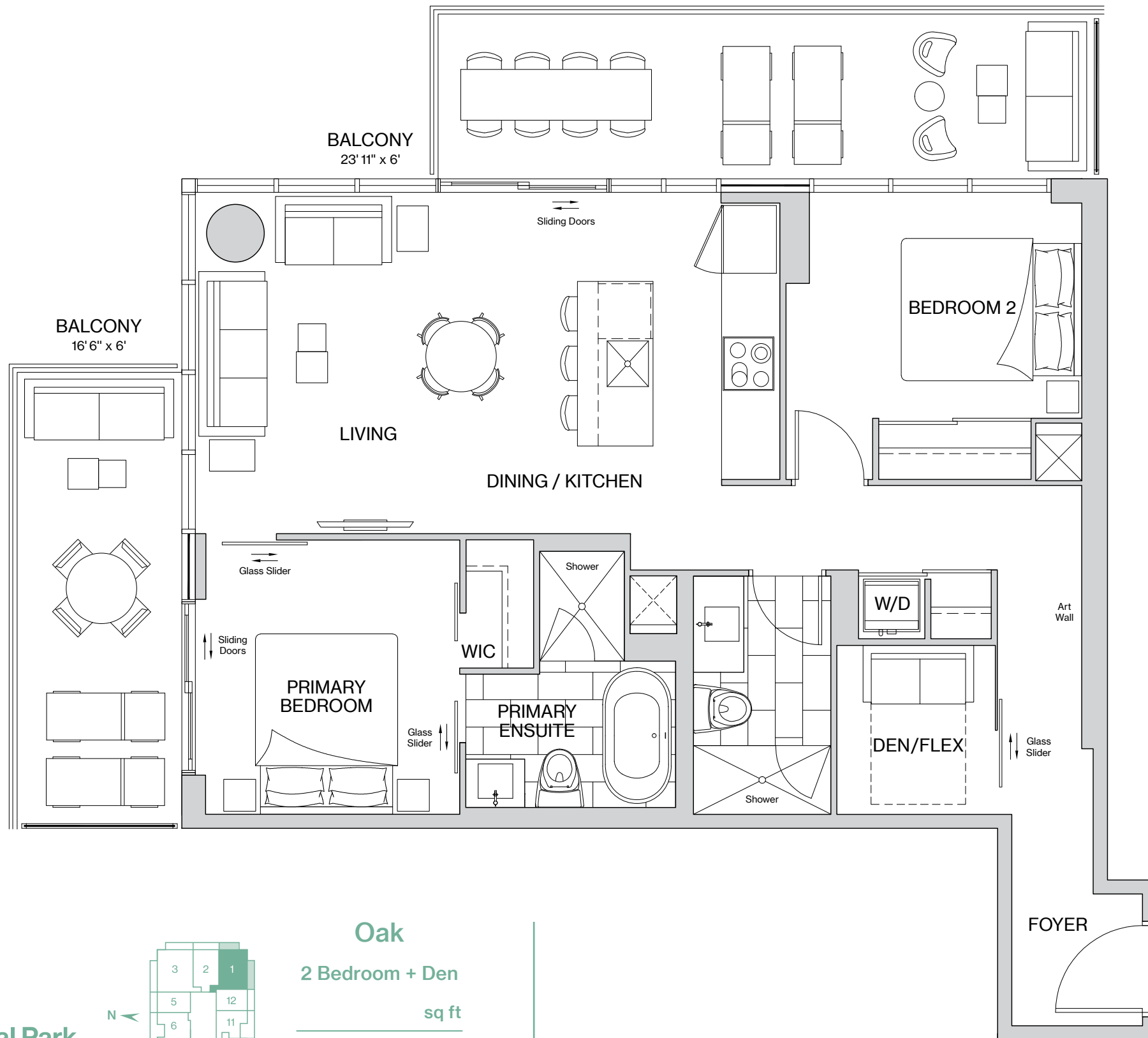
Evergreen

2 Bedroom + Den

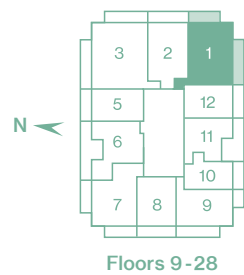
	sq ft
Interior Area	739
Balcony Area	203
TOTAL AREA	942

Sizes and specifications are subject to change without notice. E.&O.E. Actual usable space may vary from any stated floor area. All dimensions are subject to normal construction variances. Footages are estimated and may vary from that stated. Furniture not included. Measurements set forth on any floor plan are generally taken at the greatest points, without regard for any cutouts. Floor measurements were calculated on the middle floor of typical floor plates. Location of vertical mullions on balconies varies and is not necessarily as shown.

The Oak | 2 Bedroom + Den



The Residences at
Central Park



Oak

2 Bedroom + Den

sq ft

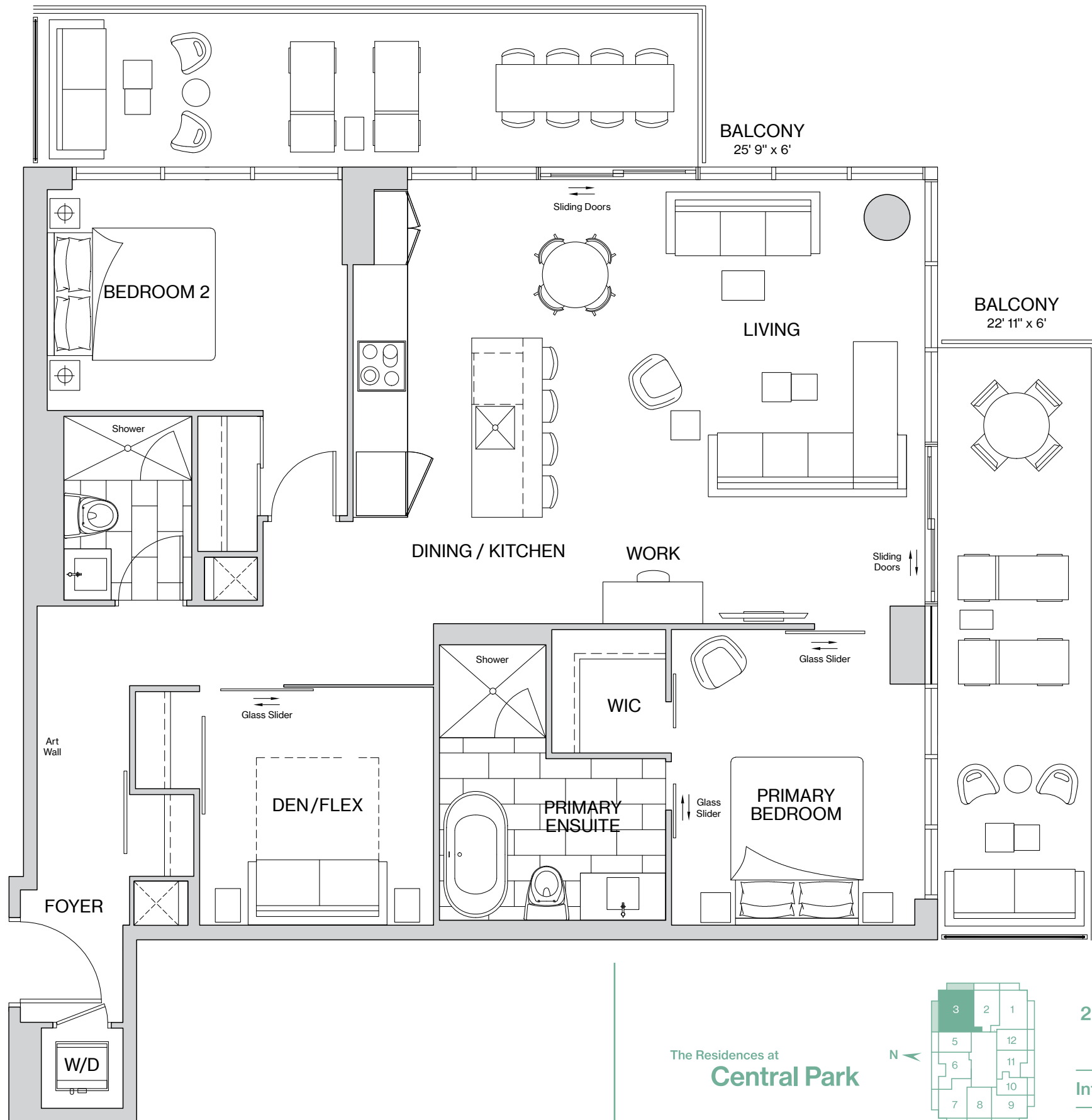
Interior Area 826

Balcony Area 243

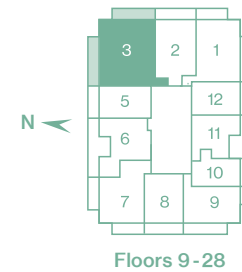
TOTAL AREA 1069

Sizes and specifications are subject to change without notice. E.&O.E. Actual usable space may vary from any stated floor area. All dimensions are subject to normal construction variances. Footages are estimated and may vary from that stated. Furniture not included. Measurements set forth on any floor plan are generally taken at the greatest points, without regard for any cutouts. Floor measurements were calculated on the middle floor of typical floor plates. Location of vertical mullions on balconies varies and is not necessarily as shown.

The Ash | 2 Bedroom + Den



The Residences at
Central Park



Ash

2 Bedroom + Den

sq ft

Interior Area 1101

Balcony Area 301

TOTAL AREA 1402

Sizes and specifications are subject to change without notice. E.&O.E. Actual usable space may vary from any stated floor area. All dimensions are subject to normal construction variances. Footages are estimated and may vary from that stated. Furniture not included. Measurements set forth on any floor plan are generally taken at the greatest points, without regard for any cutouts. Floor measurements were calculated on the middle floor of typical floor plates. Location of vertical mullions on balconies varies and is not necessarily as shown.

Features, Finishes – Luxury is Standard

The Residences at Central Park takes the quality of living to new heights

Architecture and Interiors

- Soaring 31-storey glass tower within The Residences at Central Park, designed by renowned architect Deni Poletti of CORE Architects Inc.
- Interior design by internationally acclaimed II BY IV DESIGN
- Flow-through floor plans designed to capture the maximum effect of naturally lit spaces and beautiful views
- Floor-to-ceiling window walls
- Oversized outdoor balconies

Environmental Sustainability

Industry-leading environmental sustainability initiatives showcased throughout for a clean, energy-efficient lifestyle, reducing the carbon footprint.

Residential Lobby

The elegant ground-floor residential lobby establishes a gracious and inviting sense of arrival, and the lobby concierge is committed to making your life simpler.

Original art will be displayed in the residential lobby.

Next-generation Elevators

Intelligent next-generation Destination Control Elevators optimize trip durations.

Parking

- Underground parking with EV (electric vehicle) charging stations conveniently located throughout the parking areas in residential and visitor parking spaces
- Secured, common bicycle-designated spaces at parking levels
- Bike wash and bike repair area
- Automated car wash

EV Car Share / Bike Share

- Automated onsite car-share service with the use of an app in convenient and abundant dedicated parking spaces
- Bike-share stations available at street level with use of an app

Avant-garde Restaurants and Food Markets

Diverse cuisine choices at cafes, restaurants and food markets

Creative Office Space

Central Park incorporates over 320,000 square feet of newly designed creative office space with street-level shops, cafes and services. Exceptional work environments with forward-thinking features and smart technology.

Private Children's Daycare

Central Park will include a privately operated, full-service daycare – with its own spacious, outdoor playground – available at street level in the newly designed office building, that will make taking kids to daycare a “walk in the park.”

Unparalleled Public Transit

Convenient connection to the TTC subway station, GO Transit and bus at the front door.

World-class Lifestyle Amenities – The Park Club

Fitness Amenities

- Outdoor saltwater pool
- Indoor saltwater pool
- Hot tub
- Fully equipped fitness club with cardio and weight areas
- Interactive fitness equipment
- Multipurpose fitness studios
- Spinning studio
- Pilates studio
- Yoga / meditation studio
- Martial arts / boxing studio
- Half-court basketball
- Private fitness training
- Outdoor fitness zones

Wellness Amenities

- The Park Spa
- Hair and nail bar
- Rooftop zen gardens
- Outdoor sundeck and lounges
- Juice / beverage bar
- Luxurious change rooms, steam rooms, infrared saunas and marble showers
- Relaxation lounges

Leisure Amenities

- Skating rink (refrigerated)
- Rooftop barbecue areas / cabanas
- Herb garden
- Bowling alley
- Billiards room
- Golf simulator / putting green
- Arts and crafts / hobby studio
- Children's playground
- Bike repair station
- Pet daycare
- Pet grooming area
- Pet washing area

Social Amenities

- Coworking space with meeting rooms
- Business centre with smart technology
- Lobby lounges / library
- Private event / dining room
- Private screening room / theatre
- Recording / media / music studio
- Art display / event space
- Expansive event space / banquet room
- Event kitchen / show kitchen
- Piano lounge / wine lounge
- Kids' club
- Guest hotel suites

Sophisticated Residences

- Tall, nine-foot, smooth-finish ceilings in principal rooms (exclusive of bulkheads required for mechanical purposes)
- Large windows with dramatic views
- Oversized balconies with weatherproof electrical outlets
- Sliding glass doors to balcony, as per plans
- High-efficiency individually controlled air conditioning and heating system
- Next-generation mechanical system with improved airflow and air filtration
- Fashionable range of designer laminate flooring throughout (except bathrooms and laundry)
- Individual metering of electricity and water
- Custom-designed, solid-core suite entry doors
- Architecturally designed baseboards, door frames and casings
- Frosted or clear glass sliding doors where applicable, as per plans
- Designer contemporary door hardware
- Premium latex paints on walls and drop ceilings
- Fully built-out laminate cabinets in principal bedroom walk-in closet, as per plans
- Wire shelving in all other closets
- Stacked washer and dryer in laundry area with porcelain tile flooring

Designer Kitchens

- European-inspired custom laminate cabinetry designed by II BY IV DESIGN with a selection of contemporary finishes*
- Soft-closing precision kitchen cabinet drawers and doors
- Kitchens incorporate a kitchen island where applicable, as per plans
- Fully-integrated Liebherr refrigerator-freezer with cabinetry matching front panels, as per plans
- Built-in electric Ceran cook top
- Integrated dishwasher with cabinetry matching front panels
- Concealed range hood
- Stainless steel under-mount sink with single-lever Kohler faucet and vegetable spray
- Built-in stainless steel oven
- Built-in stainless steel microwave oven
- Granite or quartz-surface slab countertops
- Granite, marble or quartz tile backsplash
- Contemporary built-in, under-cabinet integrated lighting
- Energy Star-rated appliances throughout

Lighting Designs

- Recessed LED lights within bulkheads
- Surface-mounted track lights in the Loft Collection suites
- Ceiling-mounted fixture outlets where applicable, as per plans
- Dimmer controls installed in select areas, as per plans
- Contemporary energy-saving lights

Spa-inspired Bathrooms

- Custom-designed laminate vanities by II BY IV DESIGN
- Soft-closing precision vanity cabinet drawers and doors
- Granite, quartz-surface or marble slab countertop
- Stylish designer-selected vanity mirrors
- Marble or natural stone flooring including base and walls in shower areas in principal bathrooms, as per plans (porcelain or ceramic in second bathrooms)
- Kohler designer undermount sink and faucet
- Designer accessory package
- Kohler bathroom toilets in contemporary styling
- Freestanding tub or deck-mounted soaking built-in tub, as per plans, and wall-mounted bath filler with hand-held spray
- Frameless glass-enclosed shower with marble or stone tile interior where applicable, as per plans, in principal bathrooms (porcelain or ceramic in second bathrooms)
- Contemporary rainfall showerhead and handheld body spray in principal bathrooms, handheld body spray in second bathrooms
- Safety pressure-balancing valve in tub or shower

In-suite Technology

- Provisions for cutting-edge automation systems enabling residents to control temperature, lighting, multimedia or other items in their home, from any mobile device, where applicable
- Automated temperature control system
- Smart dimmer controls installed in select areas, as per plans
- State-of-the-art mechanical system for improved airflow and air filtration
- Extreme-speed Internet connection
- State-of-the-art design allowing easy and reliable connection to the latest entertainment and information services
- Individual service panel with circuit breaker

Peace of Mind

- 24-hour concierge monitoring system includes strategically placed surveillance cameras and two-way voice communication stations with call buttons in common areas and garage
- Life safety system includes sprinklers, smoke detectors, carbon monoxide detectors and fire alarm speakers
- Security fob for common areas, doors and elevators

Tarion Home Warranty

The Residences at Central Park is enrolled in the Tarion Warranty Program and is registered under the Home Construction Regulatory Authority. The comprehensive Tarion Warranty Program guarantees the builder warranties.

* From Vendor's standard sample selection

AMEXON®

III TARION
PROTECTING ONTARIO'S NEW HOME BUYERS

THE BOLD LOOK
OF KOHLER®

STERLING
A KOHLER COMPANY

LIEBHERR AEG

COREARCHITECTS

II BY IV
DESIGN

Toddglen
Construction
Leaders in condominium construction

Canada Green Building Council
Every Building Greener

LEED
LEADERSHIP IN ENERGY AND
ENVIRONMENTAL DESIGN

BILD

Ontario Home
Builders' Association

The Residences at Central Park

1200 -1208 Sheppard Avenue East | Toronto | Canada | 416 252 3000

centralparktoronto.com



This book is made with paper containing recycled content and printed using environmentally friendly low-VOC and/or vegetable-based inks, reducing waste and our carbon footprint.

This brochure is not an offer to sell a residential unit in the condominium. All renderings are artist impressions only and are subject to change at any time. No representation is made with respect to current or proposed construction or final plans for the development or otherwise. Design elements in the residential units and common areas are subject to change at any time. Descriptions and renderings in the brochure include details or images of proposed buildings or features within or associated with the development and are at the predevelopment stage and are subject to further approvals and subject to change. The geographic areas depicted in the brochure, including surrounding areas are generally artist conceptual renderings and no representation is made with respect to their accuracy or completeness. The inclusion of descriptions and renderings reflect the current vision of the developer for the project. There is no representation made with respect to the description, furnishings, renderings or as to the final buildout as being the same, similar or as described or as shown in the brochure. The developer may substitute materials, eliminate features and change specifications in its sole discretion. The specifications and other terms contained in the Agreement of Purchase shall govern. The brochure includes decorative features, furnishings, appliances, counters, floor coverings and other such items with reference to model suites, proposed amenities, common areas and other elements and features of the residential units and the development which are conceptual in nature and may not be included in the development as built and will not be part of the standard unit or included in the common areas and other parts of the development. Changes to the common areas and amenities may be made at any time in the discretion of the developer. The features and presentation details shown in vignettes, sales offices, the presentation centre and in marketing material, are subject to change at any time and may not reflect or be implemented in the units or common areas as built. Colour, appearance and other features and finishes in the proposed residential units and common areas may vary from samples as a result of manufacturing and installation processes or otherwise. Floors and specific finishes will depend on décor packages as determined by the developer in its sole discretion. All other specifications, elements, features, descriptions and materials in the brochure, including residential units, common areas and other features and in the model suites and other marketing material are subject to change without notice. E.&O.E. © 2022 Amexon Property Development Corporation, All Rights Reserved.



centralparktoronto.com